

# Six Chances at the Unique!

A RAFFLE WITH 6 UNIQUE PRIZES

\$10 DONATION PER TICKET or \$50 FOR 6 TICKETS



Platinum Pink Sapphire & Cabochon  
Aquamarine Flower Pendant  
By designer Jeffrey Bilgore  
\$3,500 value



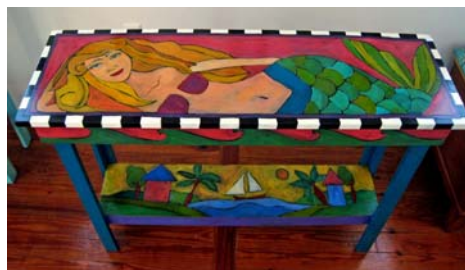
Special multi-course  
dinner & wine-tasting  
for 6 people, prepared  
in your home by Chef



Melissa  
Talmage  
\$850  
value



Hand painted, island style table (sofa/  
console) by Teri Causey of McGregor  
Art Gallery



\$600 value  
Picture is a  
sample  
only

Shopping Spree at  
your favorite stores:

- \$250 Chico's
- \$200 Eileen Fisher
- \$250 Soma



EILEEN  
FISHER



Two roundtrip tickets between any  
two cities on Southwest Airlines



**SOUTHWEST  
AIRLINES**

No restrictions  
or blackout  
dates

\$800 Value

Sanibel Sea School boat tour with Sanibel Deli & Coffee Factory picnic lunch.  
Explore regions of Sanibel/Captiva as you've never seen them, led by Dr.  
Bruce Neill of the Sea School.

\$600 value for up to 8 people



6 separate drawings will take place Saturday March 14, 2009 after the Peek at the Unique tour.  
You do not need not be present to win.



Proceeds benefit the Zonta Foundation of  
Southwest Florida and the charities it supports  
to improve the status of women in Lee County  
and around the world.

ZONTA



INTERNATIONAL